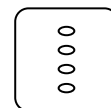


# SPDS.20

ADVANCED COLOUR TOUCH SCREEN SWITCH PLATE

Date of issue B: July 2021



SWITCHES

# SPS.20 ADVANCED COLOUR TOUCH SCREEN SWITCH PLATE

The SPS.20 provides an elegant full colour touch screen with a single integrated interface to Simmtronic lighting, blind and temperature control functions.



## KEY FEATURES

3.5" Full colour touch screen | 16 Lighting Scenes, 8 locally user programmable | Bluetooth enabled firmware upgrade | Selectable colour backdrop | Full colour LED status indication | Audible key-press feedback | Below 0.5 Watt power consumption in standby mode | Integrated blind control | Temperature control | Wake on touch | Standard easy install surface mount with black or white decor trim | Elegant recess mount option with custom back-box and fixing clips | Premium glass surface for scratch resistance and cleaning | Simple SPECS3 2-wire E-Bus installation, loop-in, loop-out for power and data

### CONTACT US

T | 01992 450126

E | SALES@SIMMTRONIC.COM

E | AFTERSALES@SIMMTRONIC.COM

W | WWW.SIMMTRONIC.COM

### HQ | LONDON & SOUTH

WATERSIDE

CHARLTON MEAD LANE

HODDESDON, HERTFORDSHIRE

EN11 0QR

### MIDLANDS & NORTH

BLOC

17 MARBLE STREET

MANCHESTER

M2 3AW

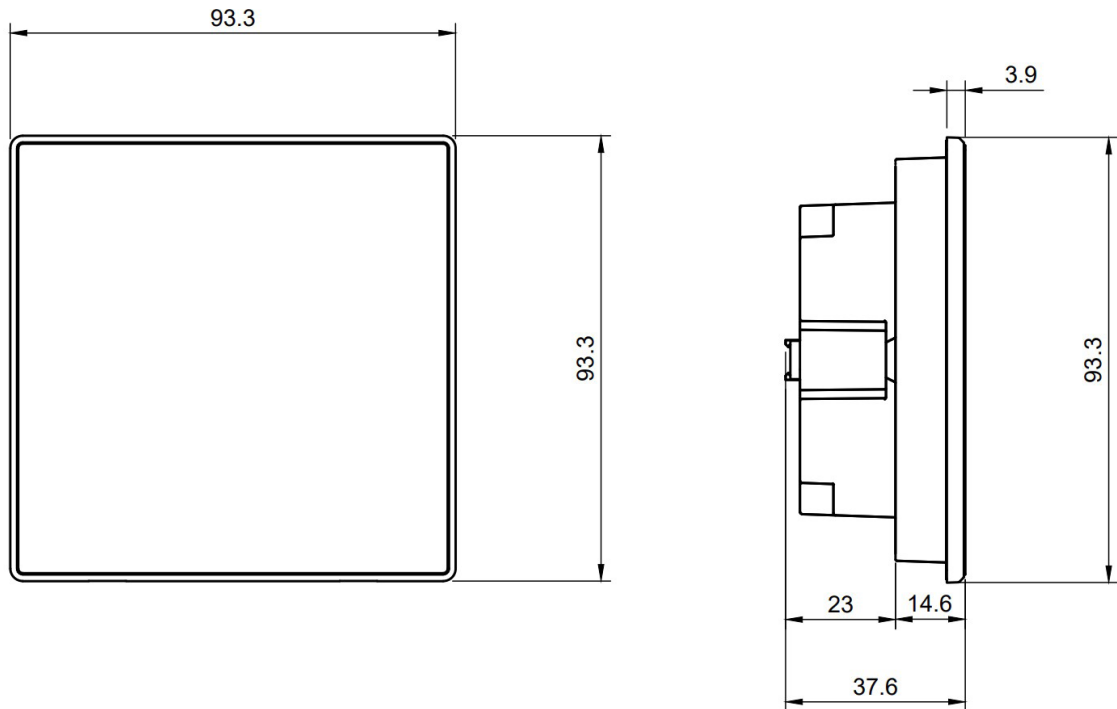
## TECHNICAL DATA

Input | Specs 2-Wire E-Bus, combined power and data

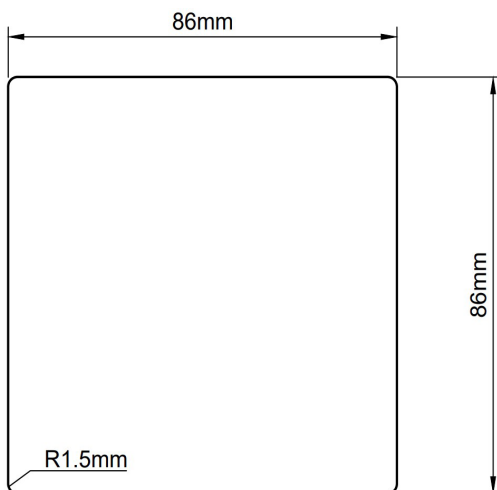
IP Rating | IP20

Weight | 200g

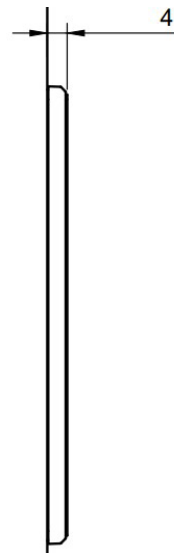
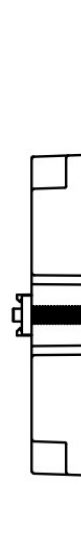
### DIMENSION DIAGRAMS



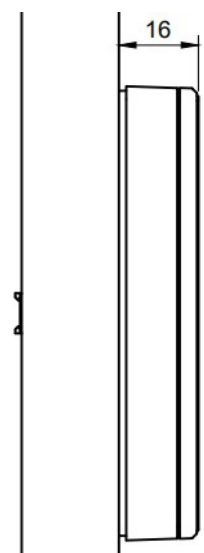
### RECOMMENDED CUT-OUT FOR RECESS MOUNT



### RECESS PROFILE



### SURFACE PROFILE



## SURFACE MOUNT

Ordering code :

SPS.20-S1-B



Box contents :

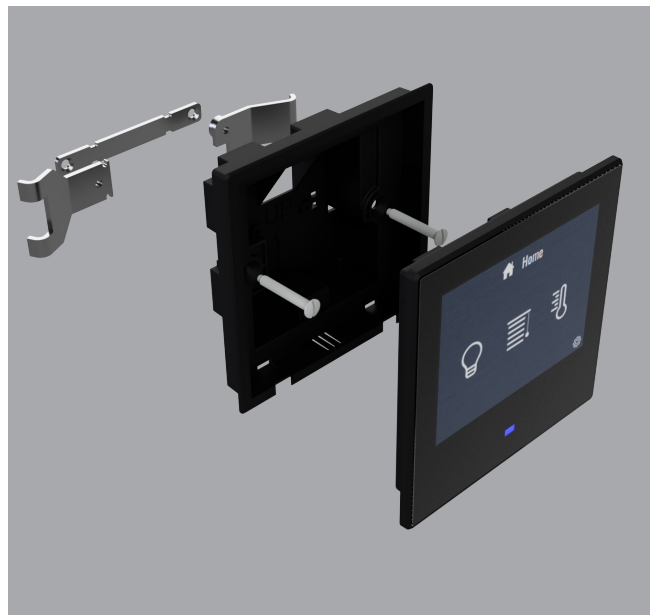
1 x SPS.20

1 x Decor  
2 x M3,5 x 30 Screws  
1 x Removal Tool

## RECESS MOUNT

Ordering code :

SPS.20-R1-B



Box contents :

1 x SPS.20

1 x Clip Kit  
2 x M3,5 x 30 Screws  
1 x Removal Tool

---

# SIMMTRONIC